



Automatic Accountability...Maximum Safety

**There is little question that one of the most pressing challenges facing fire, rescue service and other first responder leaders today is achieving accurate and complete personnel accountability.**

**Until now, accountability has typically been achieved through such manual processes as the collection of tags and the use of status boards, which consume precious resources when time is of the essence. These manual methods are also prone to error and ineffective when means of identification are misplaced, stolen, lost or forgotten.**

**Now, with SafeScene, automatic, error-proof and cost-effective accountability and resource management is possible for the first time.**

SafeScene's use of innovative RFID technology ensures that the presence of first responders is detected automatically and immediately upon arriving on-scene, ensuring the highest levels of accountability, safety, response and resource management.

- Identify all personnel automatically as they arrive on-scene; no manual action required
- Eliminate manual and mechanical accountability methods
- Detect late-arriving personnel through continuous detection
- Eliminate problems and delays caused by lost, misplaced or forgotten tags or ID cards
- Efficiently manage first responder activities and monitor safety
- Speed resource assignment with simple actions
- Improve safety with automatic visual and audible PAR reminders
- Customize with department-definable fields, appearance and PAR timers
- Assist with NIMS and NFPA 1561 compliance
- Improve response and incident review with comprehensive, time-stamped report logs of all on-scene activities
- Seamlessly interfaces with third-party incident management systems
- Provides superior, simplified multijurisdictional performance



**"SafeScene will provide us with automatic accountability of our personnel and allow us to manage the incident more efficiently and safely and comply with key NFPA standards. SafeScene is easy to use and requires no setup at the incident. We can manage the entire incident very thoroughly with SafeScene."**

Chief Dennis Kirin  
Fire Chief  
City of Oberlin, Ohio



## Sophisticated Accountability - Simple and Reliable Operations

SafeScene utilizes RFID technology to persistently monitor the incident scene for the arrival and presence of first responders and apparatus to which the SafeScene tags are affixed.

The SafeScene application, loaded on a command laptop or notebook computer, is continuously updated with the identity of on-scene personnel and apparatus and allows the incident commander to assign personnel to crews or sectors, manage resources and monitor safety through PAR timers, among other incident management tasks.

A password-protected administrative interface allows departmental administrators to configure the SafeScene application to customize appearance and function for crews/sectors, appearance, PAR timers and other parameters.

For incident review and documentation purposes, SafeScene automatically records the arrival of personnel and all on-scene activities and provides comprehensive, time-stamped reports that can be uploaded, interfaced or imported to other applications or databases.

SafeScene provides multijurisdictional capabilities with superior ease of use and reduced complexity. With SafeScene, the identities of first responders from multiple jurisdictions are recognized immediately upon arrival at the scene.

When interfaced to third-party incident command management systems, SafeScene provides automatic detection and logging of on-scene first responders.

From small volunteer fire departments to large multijurisdictional operations, and for incident scenes of all sizes, SafeScene can be easily customized to meet any agency's requirements and provide truly automatic accountability.



### SafeScene Delivers:

#### Automatic Personnel Accountability

The on-scene arrival of first responders is detected automatically and immediately, overcoming the shortfalls of existing solutions.

#### Improved Safety and Security

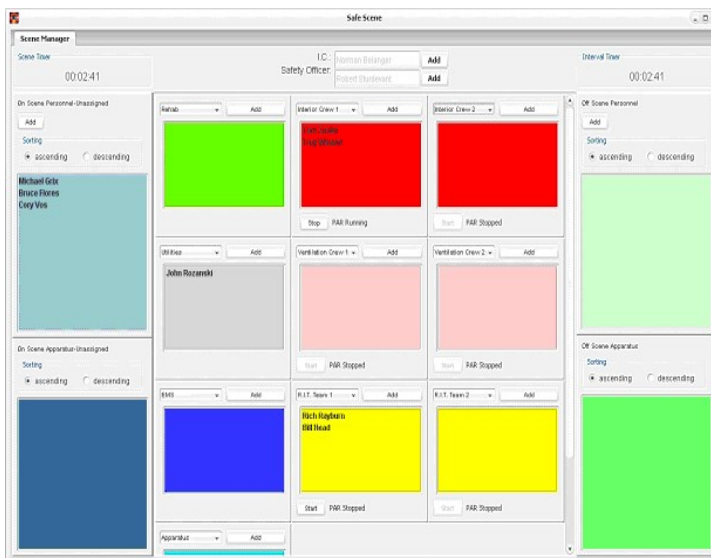
First responder safety and security is assured through the automatic detection and PAR timer alerts to prompt status inquiries.

#### Flexible Resource Management

Assignment and monitoring of personnel and equipment is achieved through the use of a simple interface that can be configured to meet departmental requirements.

#### Improved Response

Time is of the essence in an emergency situation. SafeScene allows command personnel to focus on making critical decisions.



The SafeScene Accountability Management Screen

